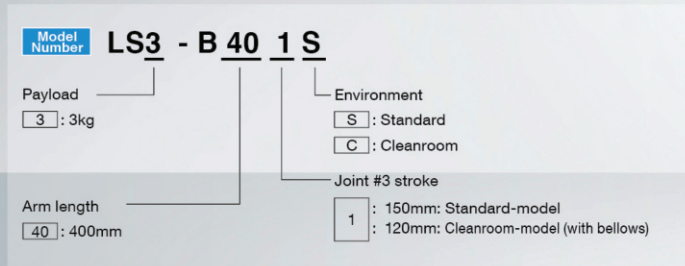


LS3 NEW

LS series reliability and performance with improved operating ease

- Built-in Ethernet port on arm for easier camera connectivity
- Batteryless motor unit for reduced maintenance
- Diagonally oriented rear ducting for a lower profile that helps reduce installation space requirements



Specifications

Model name		LS3-B
Model number		LS3-B401S/C
Arm length	Arm #1, #2	400 mm
Payload*1	Rated	1 kg
	Maximum	3 kg
Repeatability	Joints #1, #2	±0.01 mm
	Joint #3	±0.01 mm
	Joint #4	±0.01 deg
Standard cycle time*2		0.42 sec
Max. operating speed	Joints #1, #2	7200 mm/sec
	Joint #3	1100 mm/sec
	Joint #4	2600 deg/sec
Joint #4 allowable moment of inertia*3	Rated	0.005 kg·m ²
	Maximum	0.05 kg·m ²
Joint #3 down force		100 N
Installation environment		Standard or Clean*4
Mounting type		Table Top Mounting
Weight(cables not included)		14 kg
Applicable Controller		RC90-B
Installed wire for customer use		D-sub 15 pin x1 , RJ45 8 pin (CAT 5e) x1
Installed pneumatic tube for customer use		Φ6 mm × 2 , Φ4 mm × 1 : 0.59 MPa (6 kgf / cm ²)
Power		AC200-240 V Single phase
Power Consumption*5		1.0 kVA
Cable length		3 m/ 5 m/ 10 m
Safety standard		CE, KC

*1 : Do not apply the load exceeding the maximum payload.

*2 : Cycle time based on round-trip arch motion (300 mm horizontal, 25 mm vertical) with Accel 120% and 2 kg payload (path coordinates optimized for maximum speed).

*3 : If the center of gravity is at the center of each arm. If the center of gravity is not at the center of each arm, set the eccentric quantity using INERTIA command.

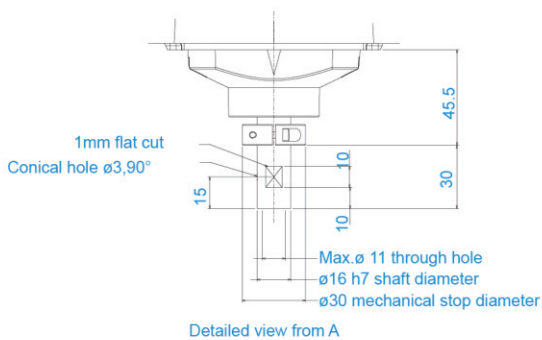
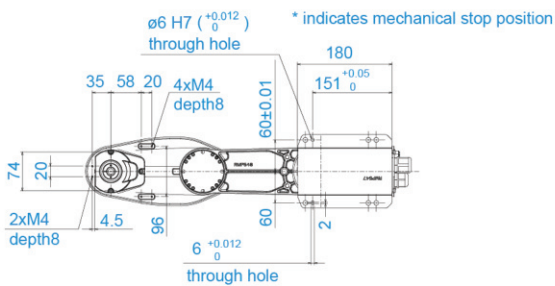
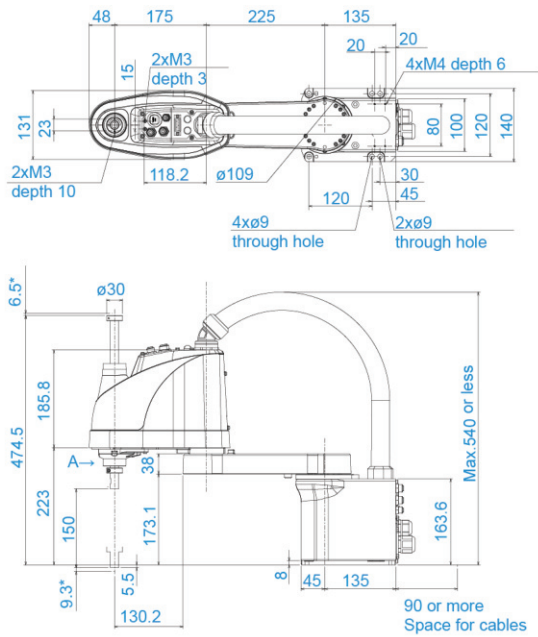
*4 : Complies with ISO Class 4 cleanroom standards.

*5 : It depends on environment and motion program.

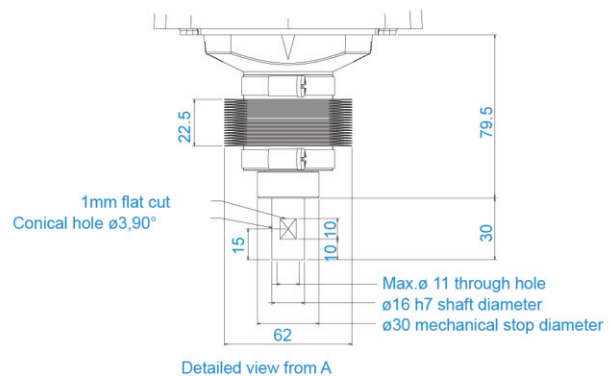
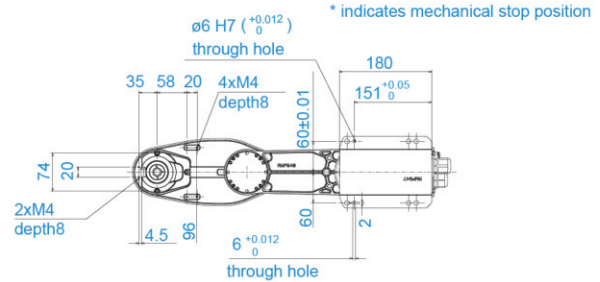
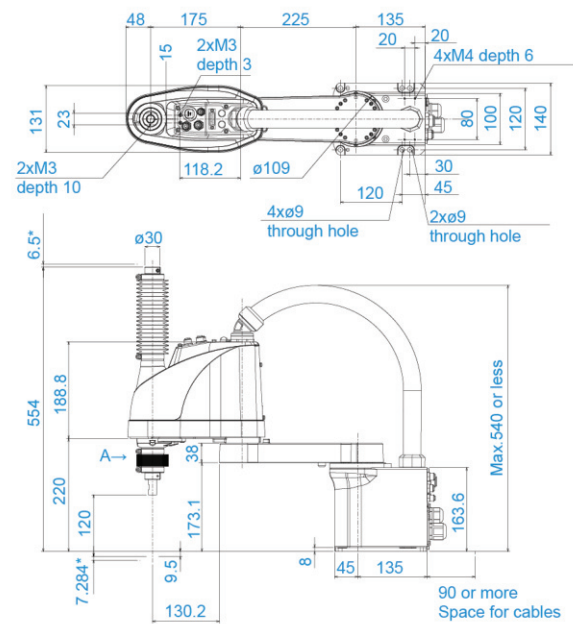
Outer Dimensions (Table Top Mounting)

[Unit: mm]

Standard-model



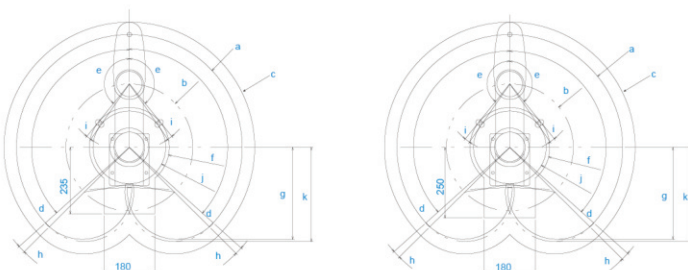
Cleanroom-model



Motion Range (Table Top Mounting)

LS3-B401S

LS3-B401C



Model	LS3-B401□	
	Standard-model	Cleanroom-model
a Arm #1 + Arm #2 length (mm)	400	400
b Arm #1 length (mm)	175	175
c Max. motion range (mm)	449	449
d Joint #1 motion angle (°)	132	132
e Joint #2 motion angle (°)	141	141
f Motion range (mm)	141.6	141.6
g Motion range at the rear (mm)	325.5	325.5
h Angle of the Joint #1 mechanical stop (°)	2.8	2.8
i Angle of the Joint #2 mechanical stop (°)	4.2	4.2
j Mechanical stop area (mm)	128.8	128.8
k Mechanical stop area at the rear (mm)	333.5	333.5

SCARA robots

6-axis robots

Controllers

Software

Vision systems

Force-sensing systems

Options